

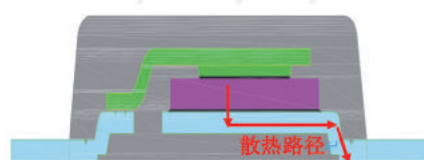
SMBF二极管

产品介绍

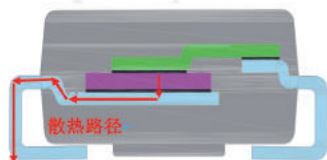
- 1.SMBF超薄封装外形，可应用于小型化电路；
- 2.SMBF封装芯片种类多，可封装GPP、DB、肖特基、FRED、TVS等芯片；
- 3.SMBF产品采用环保物料，符合RoHS标准；
- 4.SMBF产品广泛应用于高低压整流电路，高频逆变器，直流电源防护，充电桩，AC电源系统防护等领域。

产品特点

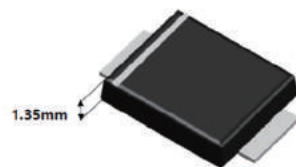
- 1.SMBF封装散热性能优：SMBF封装为平脚结构，相对于弯脚成型的SMB封装，其封装散热路径更短，热阻更低，降额拐点温度高，高温性能好。
- 2.SMBF封装本体薄，体积小，可应用于小型化、集成化电路。



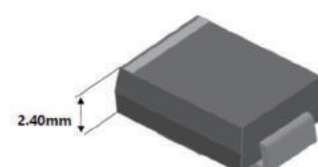
SMBF封装散热路径短



SMB封装散热路径长



SMBF封装总高TYP值1.35mm



SMB封装总高TYP值2.40mm

产品介绍

GPP系列电性参数

1、STD系列

TYPE NO.	Max.Reverse Voltage	Max.Aver. Rect.Current	Peak Fwd. Surge Current	Max.Fwd.Voltage @25°C&Rated Io		Maximum Reverse Current@Rated VRM&Tc		Operation Temp.Range
	V_{RM} (V)	I_o (A)	I_{FSM} (A)	Rated Io(A)	VF(V)	@25°C I_R (μ A)	@125°C I_R (μ A)	T_j (°C)
GS2ABF ~ GS2MBF	50-1000	2.0	50	2	1.1	5.0	100	-55 ~ +150
GS3ABF ~ GS3MBF	50-1000	3.0	100	3	1.1	5.0	100	-55 ~ +150

2、FR系列

TYPE NO.	Max.Reverse Voltage	Max.Aver. Rect.Current	Peak Fwd. Surge Current	Max.Fwd.Voltage @25°C&Rated Io		Maximum Reverse Current@Rated VRM&Tc		Operation Temp.Range
	V_{RM} (V)	I_o (A)	I_{FSM} (A)	Rated Io(A)	VF(V)	@25°C I_R (μ A)	@125°C I_R (μ A)	T_j (°C)
GR2ABF ~ GR2MBF	50-1000	2.0	50	2.0	1.3	5.0	100	-55 ~ +150
GR3ABF ~ GR3MBF	50-1000	3.0	100	3.0	1.3	5.0	100	-55 ~ +150
GR4MBF	1000	4.0	120	4.0	1.3	5.0	100	-55 ~ +150

3、HER系列

TYPE NO.	Max.Reverse Voltage	Max.Aver. Rect.Current	Peak Fwd. Surge Current	Max.Fwd.Voltage @25°C&Rated Io		Maximum Reverse Current@Rated VRM&Tc		Operation Temp.Range
	V_{RM} (V)	I_o (A)	I_{FSM} (A)	Rated Io(A)	VF(V)	@25°C I_R (μ A)	@125°C I_R (μ A)	T_j (°C)
HS2ABF- HS2DBF	50-200	2.0	50	2.0	1.0	5.0	100	-55 ~ +150
HS2GBF	400	2.0	50	2.0	1.3	5.0	100	-55 ~ +150
HS2JBF- HS2MBF	600-1000	2.0	50	2.0	1.7	5.0	100	-55 ~ +150
HS3ABF- HS3DBF	50-200	3.0	100	3.0	1.0	5.0	100	-55 ~ +150
HS3GBF	400	3.0	100	3.0	1.3	5.0	100	-55 ~ +150
HS3JBF- HS3MBF	600	3.0	100	3.0	1.7	5.0	100	-55 ~ +150

4、SF、MUR、UG系列

TYPE NO.	Max.Reverse Voltage	Max.Aver. Rect.Current	Peak Fwd. Surge Current	Max.Fwd.Voltage @25°C & Rated Io		Maximum Reverse Current@Rated VRM&Tc		Operation Temp.Range
	V_{RM} (V)	I_o (A)	I_{FSM} (A)	Rated Io(A)	VF(V)	@25°C IR(μA)	@125°C IR(μA)	Tj (C°)
ES2ABF- ES2DBF	50-200	2.0	50	2.0	0.95	5.0	100	-55 ~ +150
ES2FBF- ES2GBF	300-400	2.0	50	2.0	1.3	5.0	100	-55 ~ +150
ES2HBF- ES2JBF	500-600	2.0	50	2.0	1.7	5.0	100	-55 ~ +150
ES2KBF	800	2.0	50	2.0	1.85	5.0	100	-55 ~ +150
ES3ABF- ES3DBF	50-200	3.0	100	3.0	0.95	5.0	100	-55 ~ +150
ES3FBF- ES3GBF	300-400	3.0	100	3.0	1.3	5.0	100	-55 ~ +150
ES3HBF- ES3JBF	500-600	3.0	100	3.0	1.7	5.0	100	-55 ~ +150

5、SF、MUR、UG系列

TYPE NO.	Max.Reverse Voltage	Max.Aver. Rect.Current	Peak Fwd. Surge Current	Max.Fwd.Voltage @25°C & Rated Io		Maximum Reverse Current@Rated VRM&Tc		Operation Temp.Range
	V_{RM} (V)	I_o (A)	I_{FSM} (A)	Rated Io(A)	VF(V)	@25°C IR(μA)	@125°C IR(μA)	Tj (C°)
ES3KBF	800	3.0	100	3.0	1.85	5.0	100	-55 ~ +150
MURS220BF	200	2.0	50	2.0	0.92	5.0	50	-55 ~ +150
MURS240BF-260BF	400-600	2.0	50	2.0	1.25	5.0	50	-55 ~ +150
MURS320BF	200	3.0	100	3.0	0.92	5.0	50	-55 ~ +150
MURS340BF-360BF	400-600	3.0	100	3.0	1.25	5.0	50	-55 ~ +150
MURS460BF	600	4.0	100	4.0	1.25	5.0	50	-55 ~ +150
UG2ABF- UG2DBF	50-200	2.0	50	2.0	0.92	5.0	50	-55 ~ +150
UG2FBF- UG2GBF	300-400	2.0	50	2.0	1.25	5.0	50	-55 ~ +150
UG2HBF- UG2JBF	500-600	2.0	50	2.0	1.70	5.0	50	-55 ~ +150
UG3ABF- UG3DBF	50-200	3.0	90	3.0	0.92	5.0	50	-55 ~ +150
UG3FBF- UG3GBF	300-400	3.0	90	3.0	1.25	5.0	50	-55 ~ +150
UG3HBF- UG3JBF	500-600	3.0	90	3.0	1.70	5.0	50	-55 ~ +150

SKY系列电性参数

1、Low VF系列

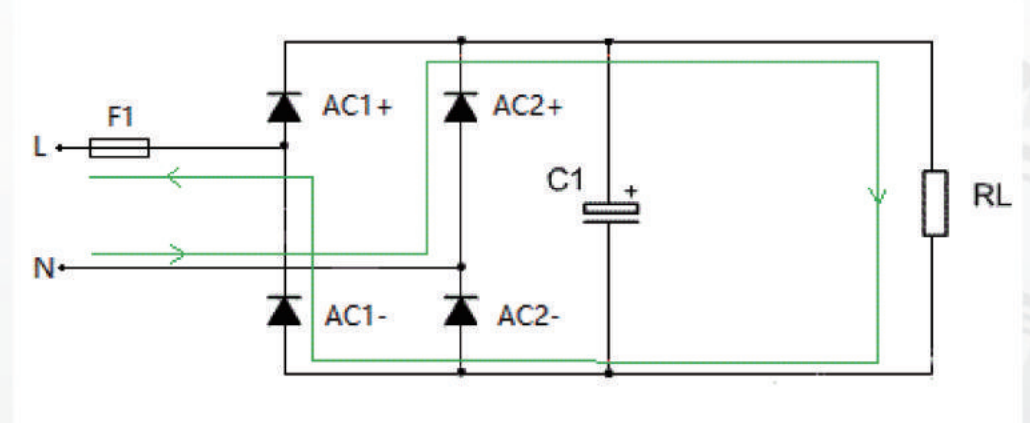
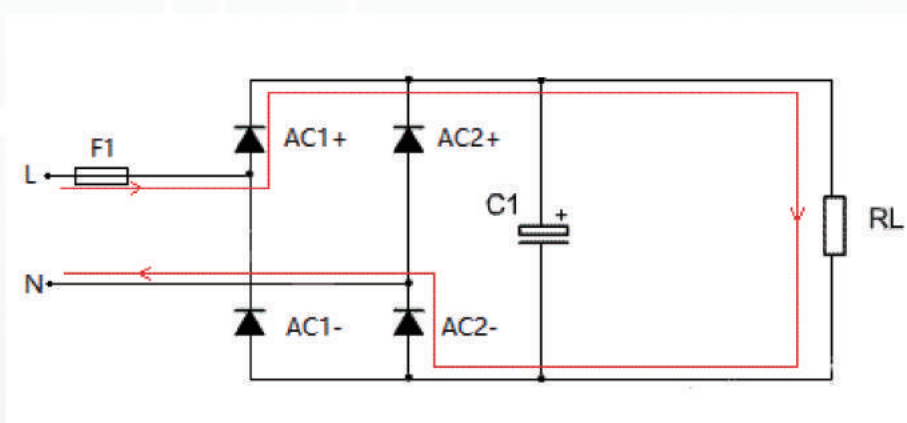
TYPE NO.	Max.Reverse Voltage	Max.Aver. Rect.Current	Peak Fwd. Surge Current	Max.Fwd.Voltage @25°C & Rated Io		Maximum Reverse Current@Rated VRM&Tc		Operation Temp.Range	Max.Reverse Voltage
	V_{RM} (V)	I_o (A)	I_{FSM} (A)	Rated Io(A)	VF(V)	@25°C IR(μA)	@125°C IR(μA)	Tj (C°)	V_{RM} (V)
SSL545BF	45	5	120	5	0.45	0.5	50	300	150
SSL56BF	60	5	120	5	0.50	0.5	50	270	150

TVS系列电性参数

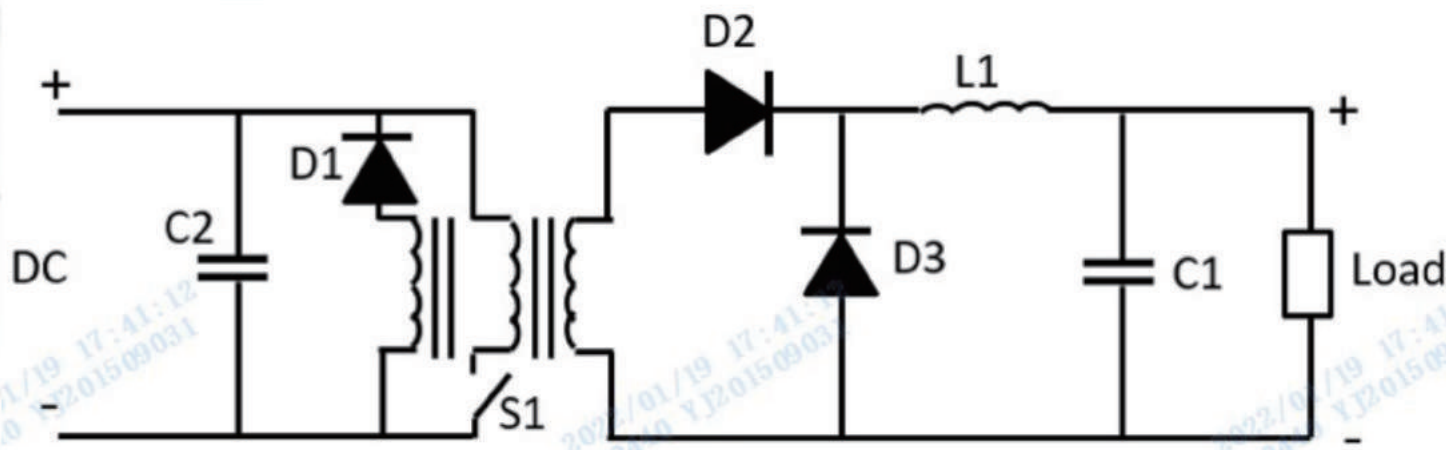
Series	Peak power dissipation @10/1000μs waveform	Working Peak Reverse Voltage VRWM (V)	Maximum Reverse Surge Current IPP @10/1000μs waveform (A)	Package	
SMBF Series	Uin	600W	5.0-220	1.69-65.22	SMBF
SMBF Series	Bi	600W	5.0-220	1.69-65.22	SMBF

应用电路

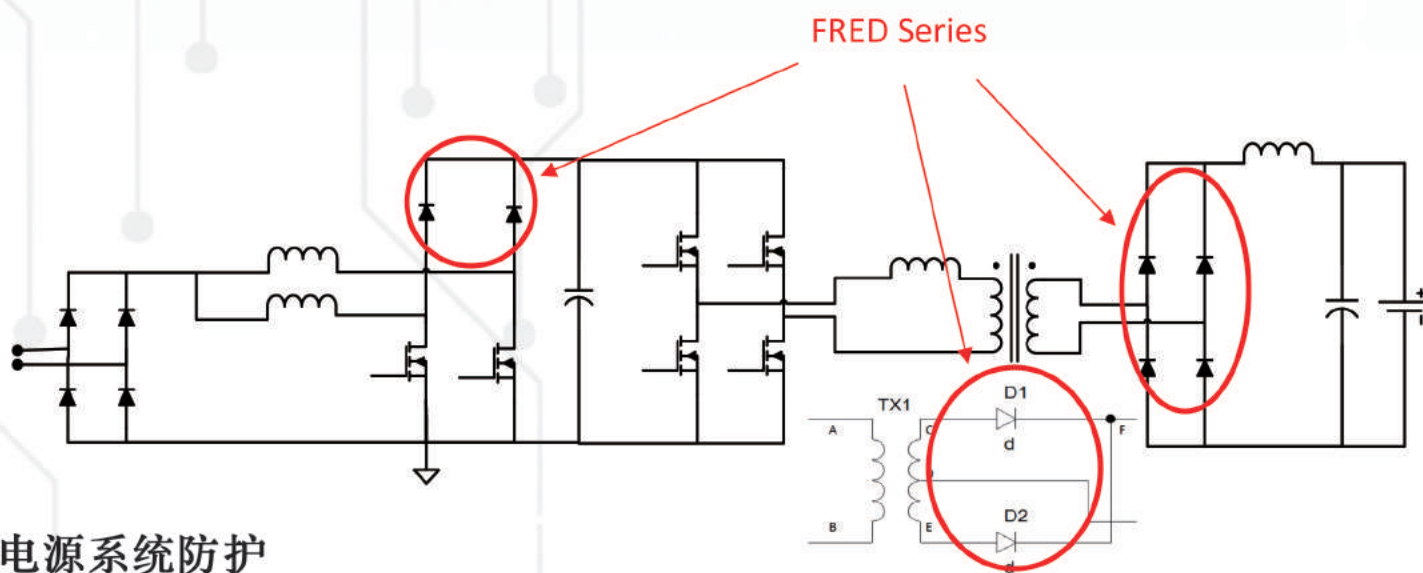
桥堆应用负载电路



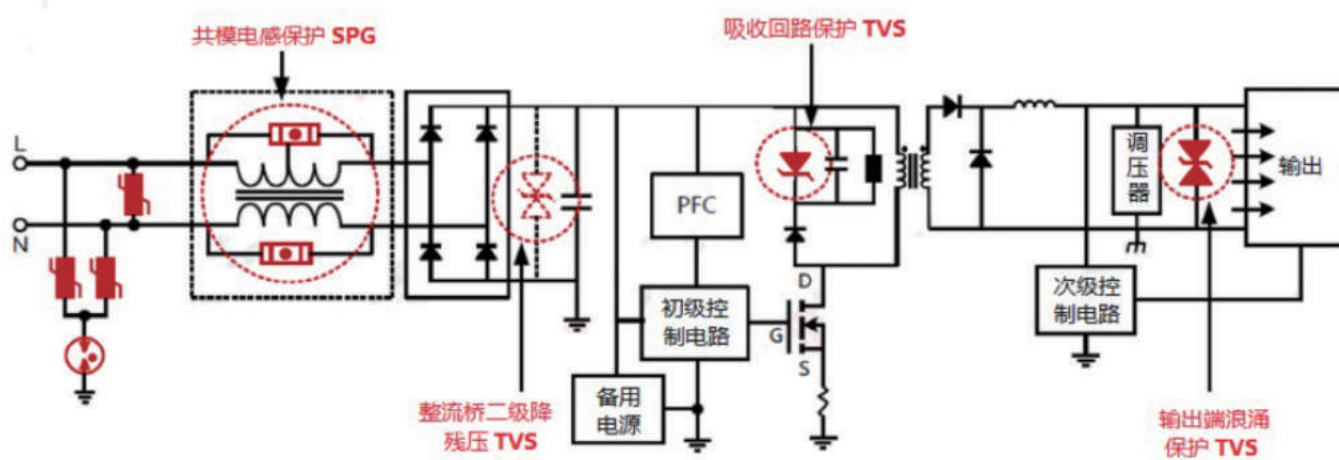
■ 运用于DC/DC转换器电路



■ 充电桩



■ TVS应用于AC电源系统防护



产品应用

